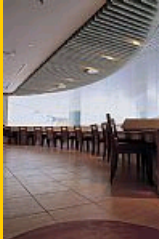




PQHY-P300YHM-A

WY Series 12hp Water Cooled Condensing Unit

R410A Heat Pump



- **High COP's possible thanks to increased efficiency and careful control of the system, allowing the largest operational water circuit temperature band ever**
- **Combining WY with waste heat energy provides unique application solutions**
- **Condensing units must be situated indoors allowing greater design flexibility and no limitation on building size**
- **40% height reduction compared to previous YGM-A model**
- **Improved pipe run of 165m with a total system pipe length of up to 500m**
- **High Sensible Cooling Function - By raising the off coil temperature, a 10% increase in sensible cooling capacity over standard operation is achievable, the result being greater comfort for occupants**
- **Able to operate with closed loop ground source water temperatures, bore hole and slinky applications are now possible**



Pictures not to scale

Product Details

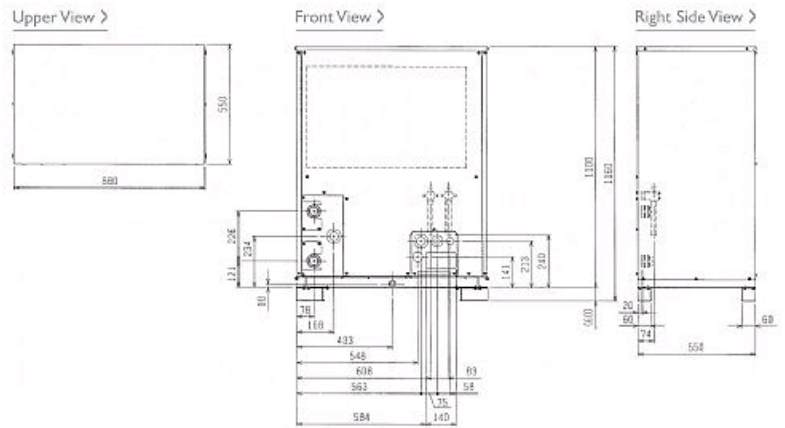
PQHY-P300YHM-A	
Capacity (kW):	
Heating (Nominal)	37.5
Cooling (Nominal)	33.5
Power Input (kW) Heating (Nominal)	8.15
Power Input (kW) Cooling (Nominal)	7.36
Max No. of Connectable Indoor Units	30
Noise (dBA)	50
Width - mm	880
Depth - mm	550
Height - mm	1160
Weight - kg	186
Electrical Supply	380-415v, 50Hz
Phase	3
Mains Cable No. Cores	4 + earth
Starting Current (A)	8
Running Current (A) - Heating	12.5
Running Current (A) - Cooling	11.3
Fuse Rating (BS88) - HRC (A)	20

Piping Restrictions

Total Piping Length (m)	300
Furthest Piping Length (m)	165
Furthest Piping Length after 1st Branch (m)	40
Between Indoor and Outdoor Units - Height (m)	50
Between Indoor and Indoor Units - Height (m)	15

Dimensions

PQHY-P300YHM-A



Telephone: 01707 282880

Email: air.conditioning@meuk.mee.com Website: <http://www.mitsubishielectric.co.uk/aircon>

Mitsubishi Electric reserves the right to make any variation in technical specification to the equipment described, or to withdraw or replace products without prior notification or public announcement.

Tel:
Fax:

